

RWY 31 RNAV (GNSS)  
GOVE, NT (YPGV)

**AWIS 123.05** **FIA 125.0** **CTAF 127.8 (R)** **PAL 119.6**

**Bearings are Magnetic Elevations in FEET AMSL**

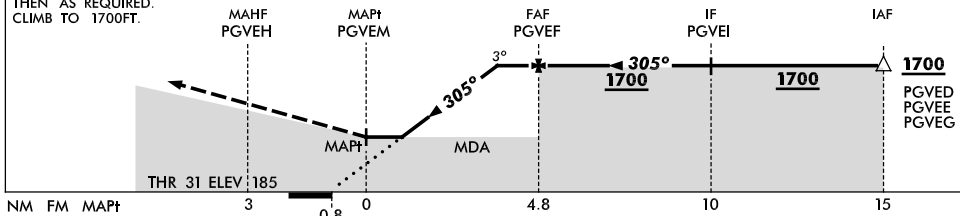
**Holding at PGVEE**

TR	INTN	TIME	MIN ALT	DME LMT
305°	Left	1	1700	

**AD ELEV 205**

[illegible]

TRACK DCT TO PGVEH,  
THEN AS REQUIRED.  
CLIMB TO 1700FT.



CATEGORY	A	B	C	D
S-I GNSS	800 (615-3.5)			
CIRCLING	840 (635-2.4)	940 (735-4.0)		1010 (805-5.0)
ALTERNATE	(1135-4.4)	(1235-6.0)		(1305-7.0)

1. MAX IAS:  
INITIAL : 210KT.

PGVGN02-109

