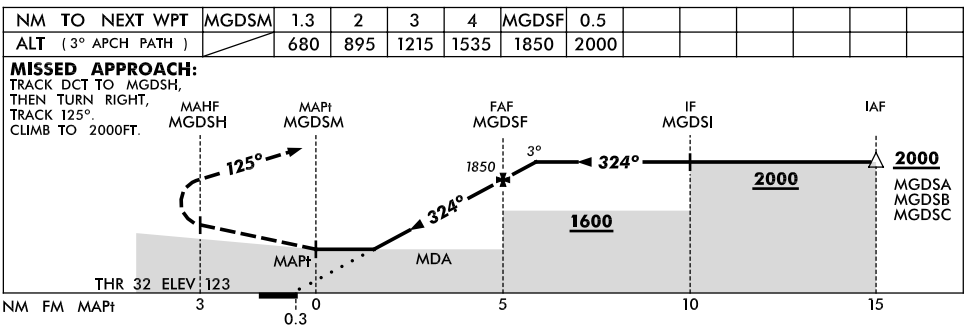
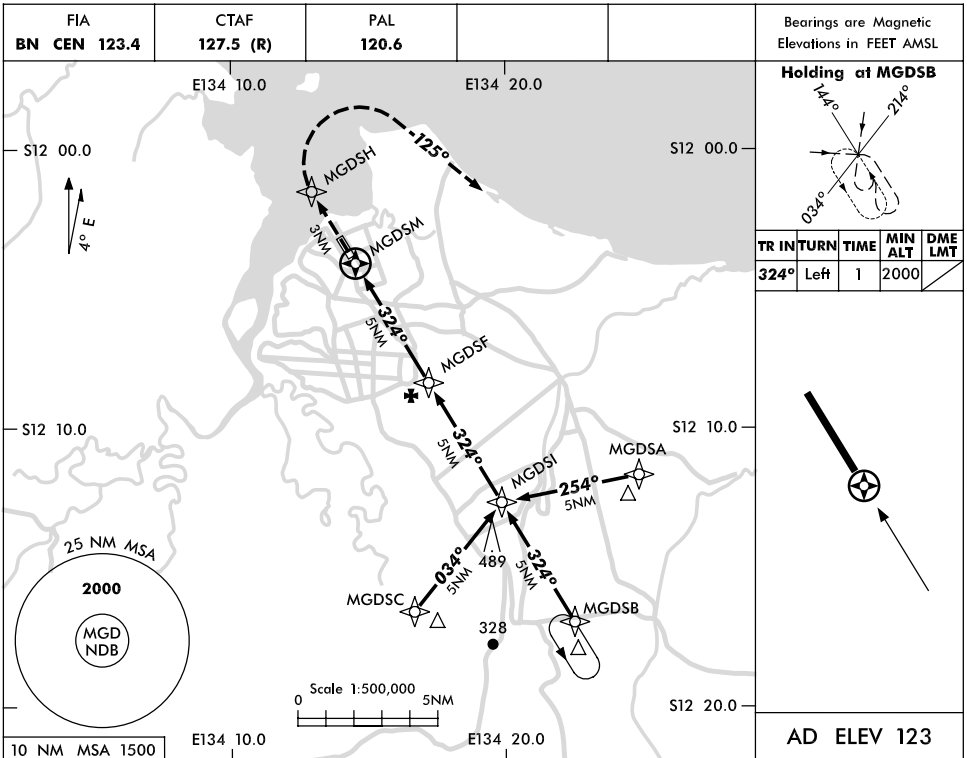


USE QNH

RWY 32 RNAV (GNSS)
MANINGRIDA, NT (YMGD)

16 MAR 2006



NOTES

CATEGORY	A	B	C	D
S-I GNSS	680 (557-3.2)			NOT APPLICABLE
CIRCLING	730 (607-2.4)	830 (707-4.0)		
ALTERNATE	(1107-4.4)	(1207-6.0)		

- MAX IAS:
INITIAL : 210KLT.

Changes: CTAF (R).

MGDGN02-106