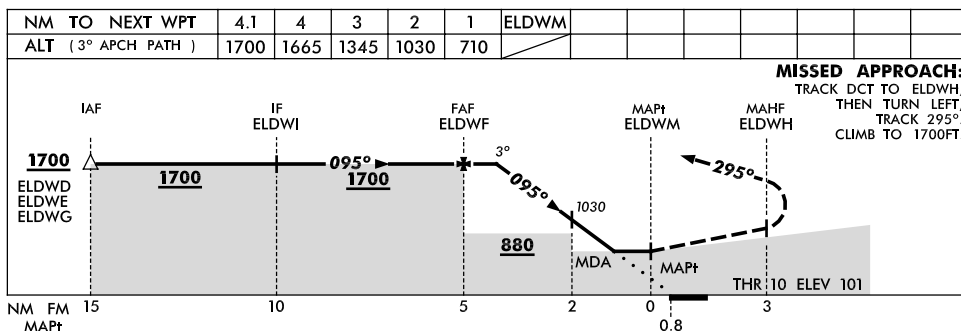
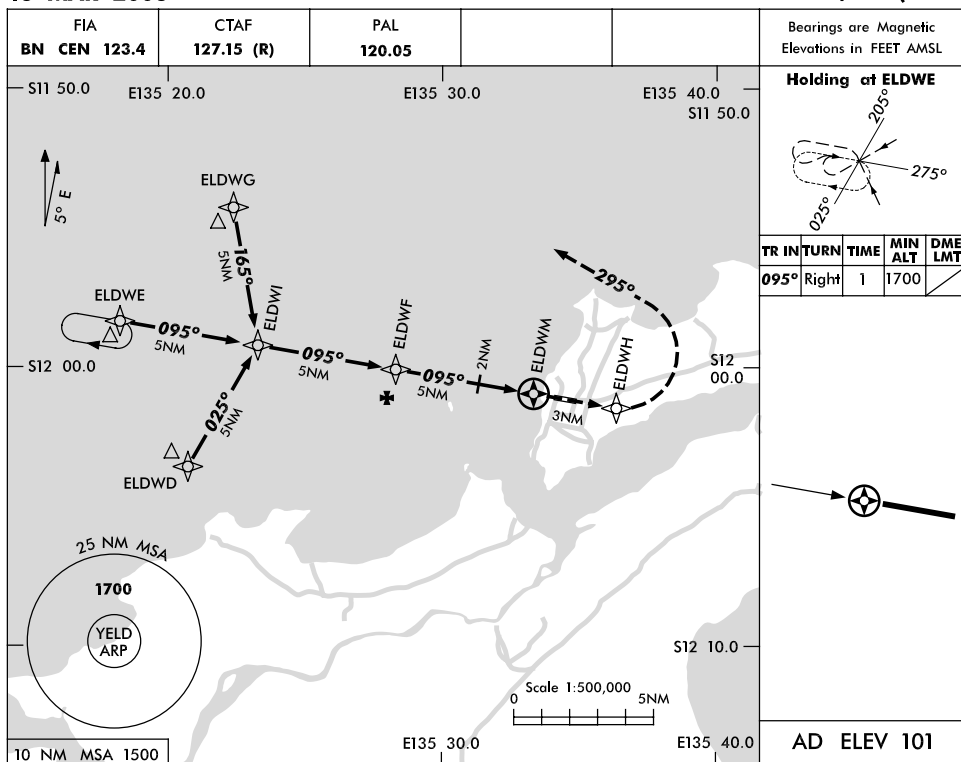


USE QNH

RWY 10 RNAV (GNSS)

16 MAR 2006

ELCHO ISLAND, NT (YELD)

**NOTES**

CATEGORY	A	B	C	D
S-I GNSS	710 (609-3.4)			NOT APPLICABLE
CIRCLING	710 (609-2.4)		800 (699-4.0)	
ALTERNATE	(1109-4.4)		(1199-6.0)	

1. MAX IAS:
INITIAL : 210KLT.

Changes: CTAF (R), FIA FREQ.

ELDGN01-106