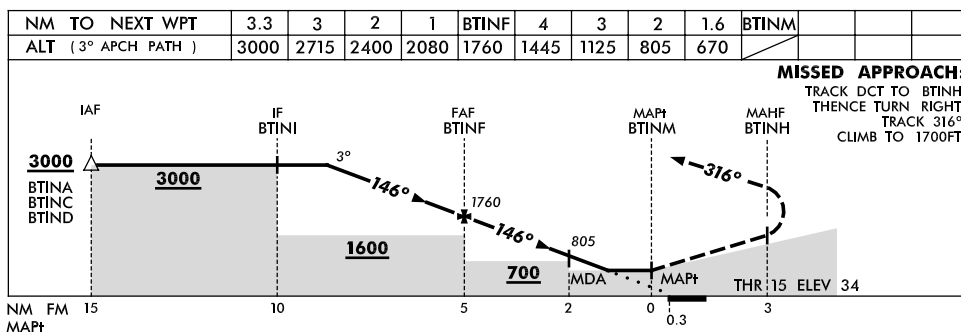
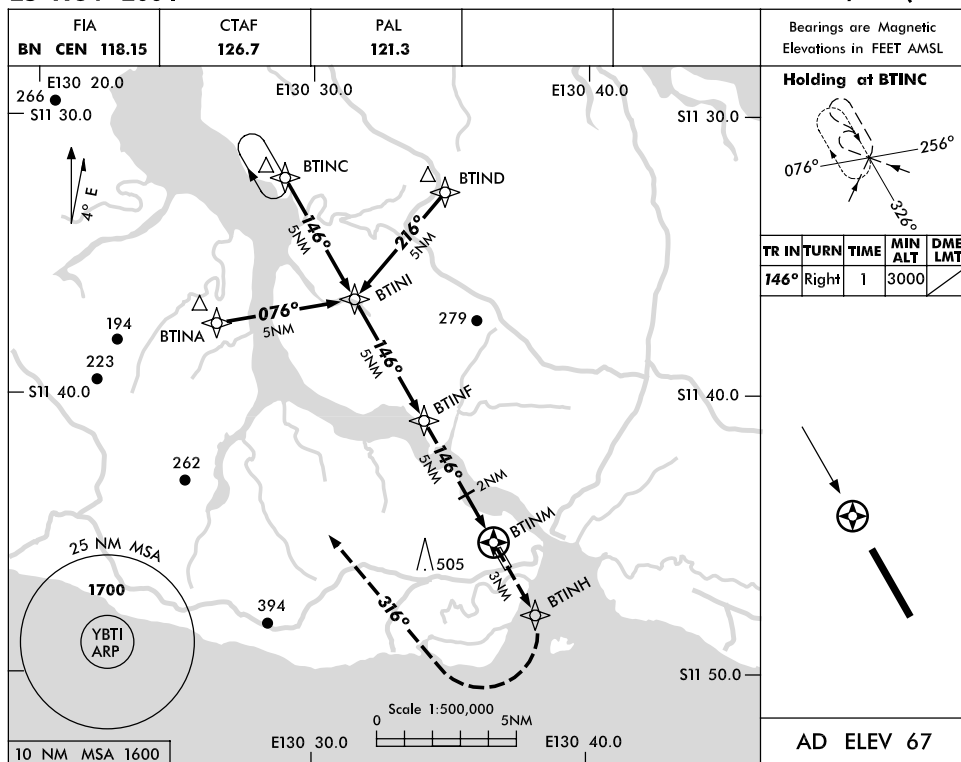


USE QNH

RWY 15 RNAV (GNSS)

25 NOV 2004

BATHURST ISLAND, NT (YBTI)



## NOTES

CATEGORY	A	B	C	D
S-I GNSS	670 (636-3.6)			NOT APPLICABLE
CIRCLING	790 (723-2.4)		1000 (933-4.0)	
ALTERNATE	(1223-4.4)		(1433-6.0)	

- MAX IAS:  
INITIAL : 210KT.
- HOLDING AT BTINC  
OVERLAYS YGPT RWY  
04 GPS.

Changes: PROC NAME, ALT/MINIMA, HAT, Editorial.

BTIGN01-101



AIRSERVICES AUSTRALIA